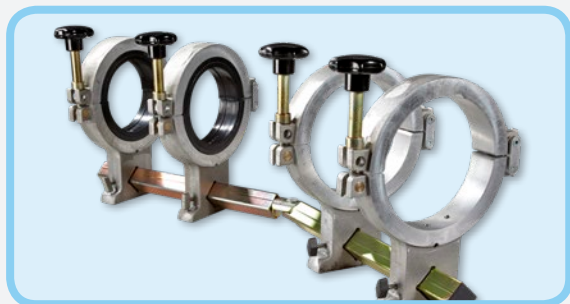




Mains Restraining Clamp 63-200mm

The Caldertech Mains Restraining Clamp will hold HDPE pipe securely during the weld process while also providing excellent re-rounding abilities for coiled pipe.

Made from lightweight die cast aluminium and steel, the mains clamp is quick to install and easy to use. Available with straight, 3 way or angle maker, and can also be supplied in double clamp format, i.e. 2 clamps on each side.



FEATURES

- Quick to install and easy to use
- Lightweight die cast aluminium
- Suitable for pipe sizes 63mm-200mm
- Can be supplied in double clamp format (2 clamps on each side)
- Available in 2 or 3 way configuration
- Available with a straight base or an angle maker or 45° and 90°
- Re-rounding capabilities

Mains Restraining Clamp 63-200mm

Positioning Kits

Code	Description
01-15-101	Mains restraining clamp 63-200mmØ straight base no reducing shells
01-15-102	Mains restraining clamp 63-200mmØ angle maker base no reducing shells
01-15-103	Mains restraining clamp 63-200mmØ 3 way no reducing shells
01-15-106	Mains restraining clamp 63-200mmØ (double) straight base
01-15-107	Mains restraining clamp 63-200mmØ (double) angle maker no reducing shells
01-15-108	Mains restraining clamp 63-200mmØ (double) 3 way no reducing shells
01-15-110	Mains restraining clamp 63-200mmØ shell set 200-180mm (4 pcs.)
01-15-111	Mains restraining clamp 63-200mmØ ½ set plastic shell set (2 pcs.) 200-180mm
01-15-130	Mains positioning clamp 63-200Ømm shell set 200-63mm (4 pcs.)
01-15-131	Mains positioning clamp 63-200mmØ shall set 200-110mm (4 pcs.)
01-15-078	Mains restraining clamp 63-200mm plastic shell set 200-180mmØ 3 way (6 pcs.)
01-15-063	Spare hinge & toggle for mains restraining clamp 63-180/200mm
01-15-064	Spare clamp casting base traverse fixing wing nut
01-15-065	Spare pillar nut and hand wheel assembly only for mains restraining clamp
01-15-066	Spare pillar nut, threaded bar and toggle complete
01-15-132	Mains positioning clamp 63-200mm shell set 200-160mmØ (4 pcs.)



Double Clamp Format
with Angle Maker Base

Caldertech Europe
Bretfield Court, Dewsbury,
West Yorkshire WF12 9BG, UK
T: +44 (0)1924 469571
E: info@caldertech.com

Caldertech Australasia
Unit 3/30 Juna Drive,
Malaga WA 6090, Australia
T: +61 (0)8 9209 1132
E: sales@caldertech.com.au

